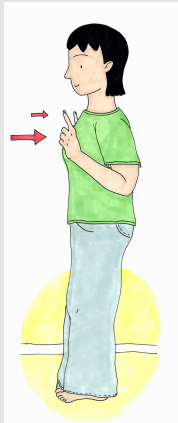
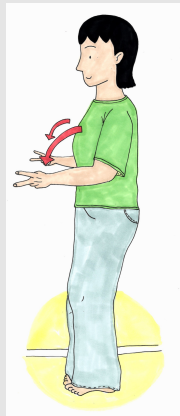


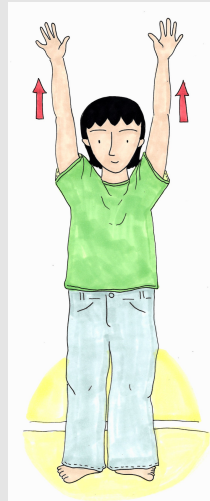
# Rörelser – långa vokaler



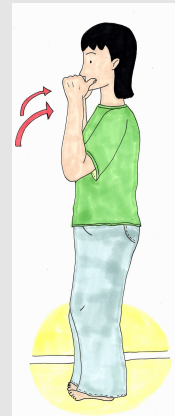
/i/ - [i:]  
bil



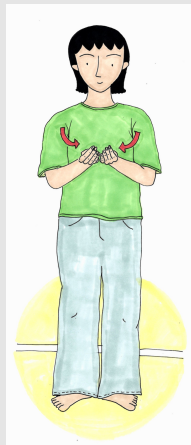
/y/ - [y:]  
ny



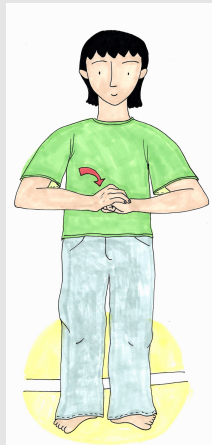
/ʊ/ - [ʊ:]  
bur



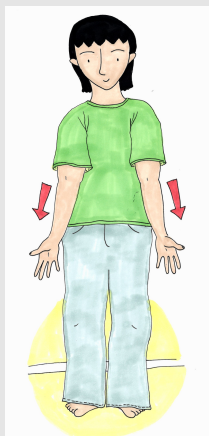
/u/ - [u:]  
bok



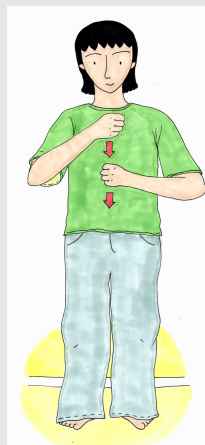
/e/ - [e:]  
ben



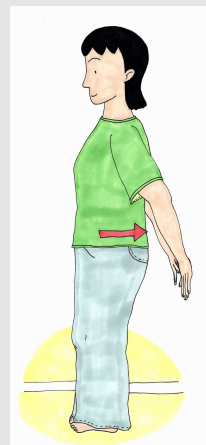
/ø/ - [ø:, œ:]  
snö, bör



/æ/ - [ɛ:, æ:]  
län, bär



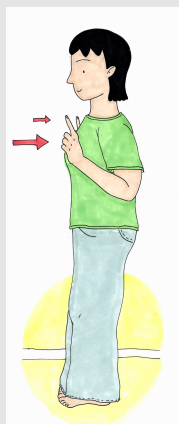
/ɑ/ - [ɑ:]  
mat



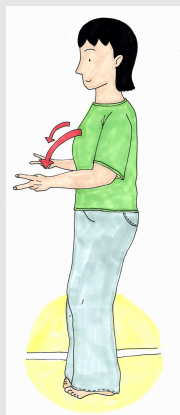
/o/ - [o:]  
båt

Illustrationer: Klara Svedäng

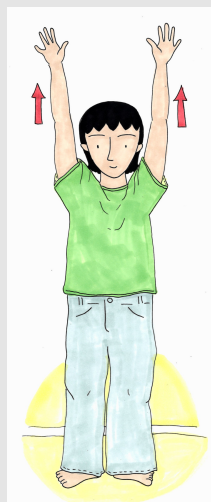
# Rörelser – korta vokaler



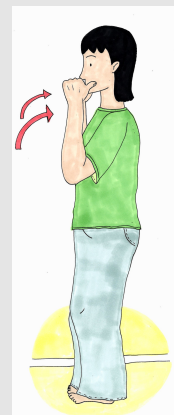
/i/ - [ɪ]  
sill



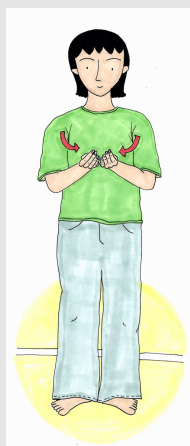
/y/ - [ʏ]  
nytt



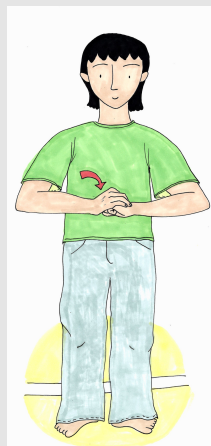
/ʊ/ - [ø]  
burr



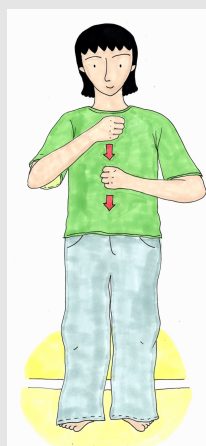
/u/ - [ʊ]  
bott



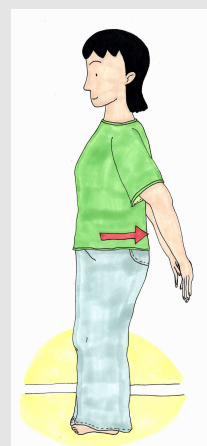
/e/ - [ɛ, æ]  
bett, kär



/ø/ - [ø, œ]  
mött, mört



/ɑ/ - [a]  
matt



/o/ - [ɔ]  
fått

Illustrationer: Klara Svedäng